

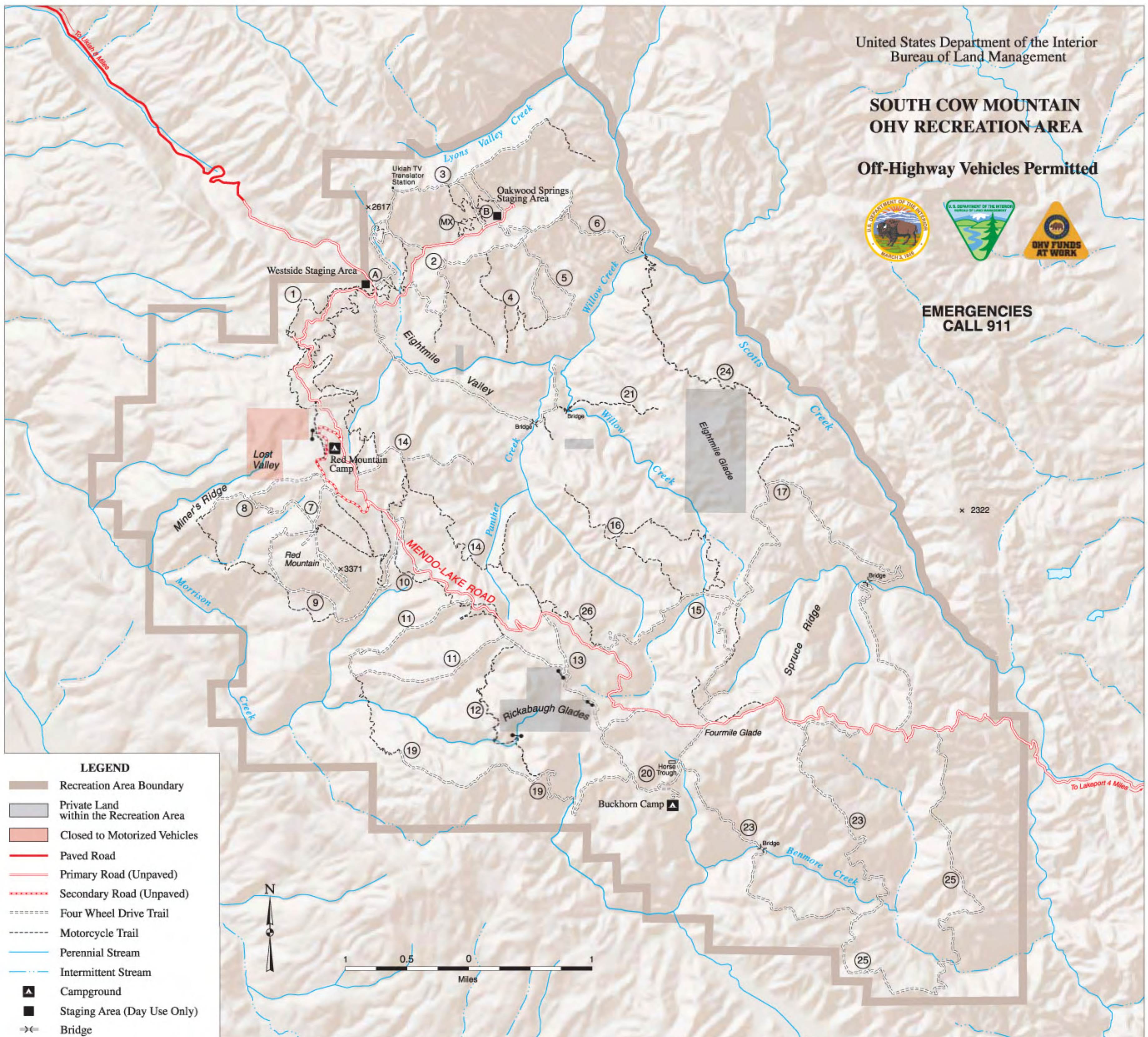
United States Department of the Interior
Bureau of Land Management

SOUTH COW MOUNTAIN OHV RECREATION AREA

Off-Highway Vehicles Permitted

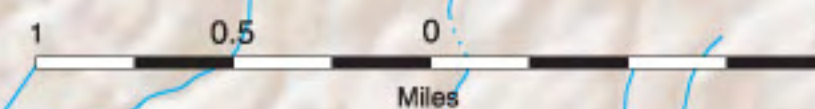


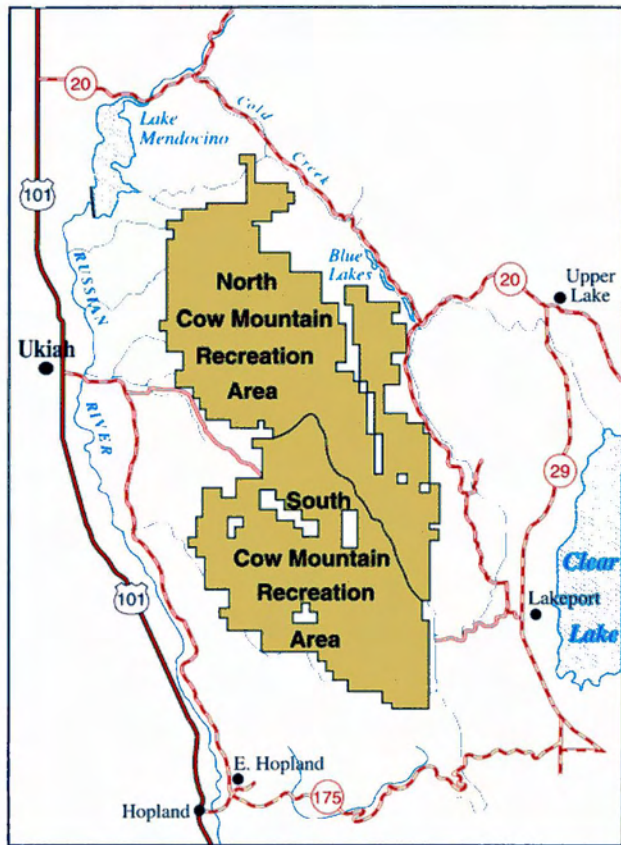
EMERGENCIES
CALL 911



LEGEND

- Recreation Area Boundary
- Private Land within the Recreation Area
- Closed to Motorized Vehicles
- Paved Road
- Primary Road (Unpaved)
- Secondary Road (Unpaved)
- Four Wheel Drive Trail
- Motorcycle Trail
- Perennial Stream
- Intermittent Stream
- Campground
- Staging Area (Day Use Only)
- Bridge





**Cow Mountain Area
Vicinity Map**

**Bureau of Land Management
Ukiah Field Office
2550 North State Street
Ukiah, CA 95482-3023
(707) 468-4000**

<http://www.ca.blm.gov/ukiah>

OHV Trail Key*

Trail No.	Trail Names	Motorcycle	ATV	4X4 Short	4X4 Long
(A)	Learner's Lot	●	●	⊘	⊘
(B)	Tot Lot	■	■	⊘	⊘
(MX)	Practice Track	●	●	⊘	⊘
(1)	Campground Trail	●	●	⊘	⊘
(2)	Oakwood Springs Loop	●	●	●	●
(3)	Lyons Ridge	◆	◆	◆	N/R
(4)	Chalk Hill	●	●	⊘	⊘
(5)	Tule Pond	●	●	◆	◆
(6)	Scotts Creek	●	●	●	●
(7)	Pebble Point	●	●	◆	N/R
(8)	Miner's Ridge	◆	◆	●	●
(9)	Red Mountain	●	●	■	■
(10)	Short Ridge	●	●	⊘	⊘
(11)	Morrison Ridge	●	●	●	●
(12)	Acupuncture Alley	◆	◆	⊘	⊘
(13)	Brushy Ridge	■	■	■	■
(14)	Panther Ridge	●	◆	⊘	⊘
(15)	Old Road	■	■	■	■
(16)	Whitethorn	●	●	⊘	⊘
(17)	Spruce Canyon	●	●	◆	N/R
(19)	Pyramid Ridge	●	◆	●	●
(20)	Buckhorn Road	■	■	■	●
(21)	Fountain of Youth	●	●	⊘	⊘
(23)	Benmore Loop	●	●	◆	N/R
(24)	Eastside Trail	●	●	⊘	⊘
(25)	Boundary Ridge	●	●	◆	N/R
(26)	Cooper's Crawl	◆	N/R	⊘	⊘

- Easiest
- More Difficult
- ◆ Most Difficult
- N/R Not Recommended
- ⊘ Prohibited

*These ratings are for primary trails only. Many side trails may have higher or lower ratings. Pay attention to trail signs.

tread lightly!

LEAVING A GOOD IMPRESSION

